



Assess your candidates' dispositions with solutions from Watermark and the EDA

Accreditors, including CAEP, require that education programs address and assess candidate dispositions throughout their experience—both in the classroom and during field experience. Why do dispositions matter? Because these attitudes, values, and behaviors shape how educators interact with students, colleagues, and families in their work guiding student learning and development. Providing candidates with information about programmatic dispositional expectations can help cultivate positive attitudes and actions before and during clinical experiences, while proactively addressing any negative behaviors to ensure candidate success.

Watermark-EDA Packages

Each of our EDA packages includes:

- ▶ The assessment rubric
- ▶ A detailed technical manual, including timeline for implementation and curricular suggestions
- ▶ An initial calibration session with EDA experts
- ▶ Annual calibration with on-demand training sessions

In partnership with the EDA, LLC, a team of researchers from the University of Tampa, we offer education providers a set of instruments to assess candidate dispositions in various types of programs, including traditional educator preparation programs, online programs, and educational leadership programs.

As an added benefit, when you use the EDA instruments with Watermark assessment solutions, we can help you simplify the rubric distribution, score collection, and reporting processes – while archiving data for quick reference at any time and increasing data transparency in your program.

Watermark-EDA Products

Educational Disposition Assessment (EDA)

Designed to assess the dispositions of candidates in traditional educator preparation programs, the Educational Disposition Assessment was developed through 700 hours of research over seven years. The EDA consists of dispositions and related indicators explicitly aligned to CAEP standards, InTasc Standards*, and professional dispositional elements found in prominent teacher evaluation instruments.

- Formatted as a three-point rubric with nine research-based dispositions
- Aligned to CAEP and InTasc standards
- Reviewed and rated by more than 350 experts, including professors, deans, directors, principals, district-level representatives, and cooperating teachers

*It is recommended that institutions align their respective state standards with the InTASC standards identified in the instrument.



Education is more than a certificate or degree. It's the path to a better future.
Learn more at watermarkinsights.com.

Dispositions of the Online Learner Instrument (DOL)

The Dispositions of the Online Learner Instrument is designed for candidates participating in educator preparation programs that include a significant online component. It is aligned to ISTE, AECT, and CAEP standards and can be used along with the EDA rubric to capture a holistic view of online student dispositions.

- Formatted as a three-point rubric with eight research-based dispositions
- Reviewed and rated by more than 150 online educators and subject matter experts
- Aligned to ISTE, AECT, and CAEP standards
- Complements the EDA by offering indicators of learners' online dispositions

Educational Leadership Disposition Assessment (EDLDA)

Education leaders require a unique set of dispositions to be effective in their roles as administrators, coaches, and advocates. The Educational Leadership Disposition Assessment includes leadership dispositions for performance-based growth and development aligned with NELP and CAEP standards.

- Formatted as a three-point rubric with fifteen research-based leadership dispositions
- Aligned with both CAEP and NELP standards
- Reviewed and rated by more than 100 professors and principals, as well as deans and directors of educational leadership programs

How EDA developed these instruments

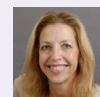
All of the Watermark-EDA instruments have been developed in accordance with psychometric best practices and tested by hundreds of in-service professionals. The instruments successfully address each component of the CAEP Evaluation Framework to include:

- suggestions for administration and explanation of purpose
- indicators that require evaluators to judge consequential attributes of candidate proficiencies and standards
- well-defined scoring criteria
- estimates of reliability to include reported reliability coefficients, and
- evidence of construct validity with composite scores that move toward predictive validity.

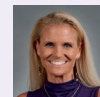
The instruments are designed to be used at multiple points during a program—from admission to graduation—to collect baseline data and track candidate progress to both highlight exemplary dispositions, and identify when additional support is needed to ensure candidate success. The assessments can be used individually or in tandem to provide institutions with valid, reliable, and meaningful data for continuous improvement, while documenting alignment for accreditation.

Who is the EDA, LLC?

Educational Dispositional Assessment Consultants, LLC is composed of four research professors from The University of Tampa.



DR. GINA ALMERICO
Director, Educator Preparation Program



DR. SUZANNE ENSMANN
Assistant Professor
College of Social Science, Mathematics, & Education



DR. PATTIE JOHNSTON
Director, Master's in Education Program



DR. ADRIANNE WILSON
Graduate Coordinator/
Educational Leadership Program

About Watermark:

Watermark gives higher education institutions the tools they need to easily track, manage, and examine their data. Complete assessment and accreditation requirements, capture and analyze student feedback, showcase faculty accomplishments, and improve student engagement with our solutions. Watermark's Educational Impact Suite (EIS) helps faculty and staff spend less time getting lost in spreadsheets, and more time focused on what really matters: institutional and student success. Learn why we are trusted by over 1,700 colleges and universities at www.watermarkinsights.com.